

DETAIL & SUBMITTAL SHEET

SECTION DETAIL



SPECIFICATIONS:

- Door:** 18 ga. steel
- Frame:** 16 ga. steel, 1" wide perforated flange of 24 ga. galvanized material for mounting purposes, 2 1/2" deep
- Insulation:** 2" thick mineral wool (THERMAFIBER®), in between two pieces of 22 ga. steel
- Hinge:** Fully concealed, pivot rod type hinge. Allows opening to 140°
- Latches:** Self-latching direct action latch, accepts both key and knurled knob
- Automatic Panel Closer:** Furnished on all doors. Vertical position only. Ceiling position requires self-assisted closing
- Inside Panel Release:** Furnished on all doors
- Finish:** Grey baked enamel coat
- Ceiling Installation:** To comply with current fire regulations, largest size acceptable is 24" x 36"

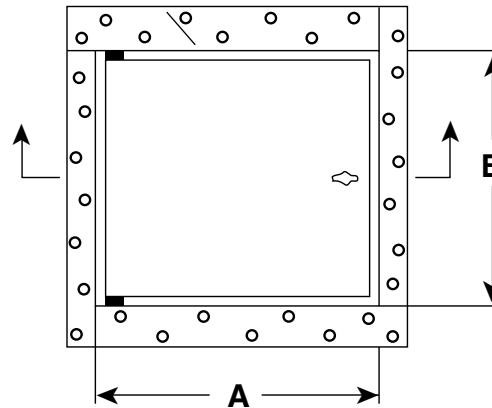
OPTIONS:

- Finishes:**
- Stainless Steel Type 304 No. 4 Satin Finish Brushed
 - Stainless Steel Type 316 No. 4 Satin Finish Brushed
- Options:**
- Mortise Best Lock
 - Ultra lock
 - Hot Smoke Seal gasketing all 4 sides **
 - Special sizes available

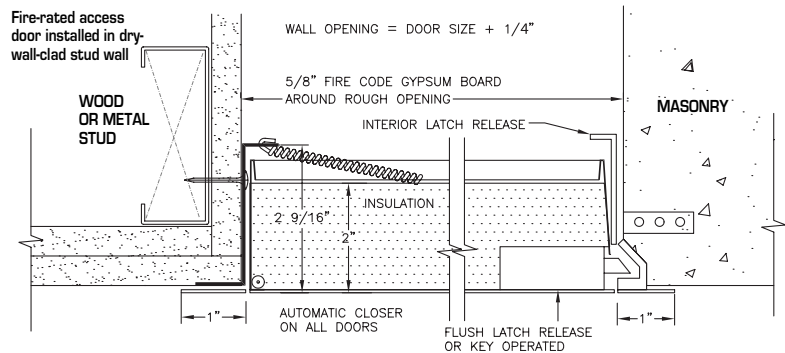
✓	Item No.	Door Size W x H	Wall Opening	Slam Catch	Ship Wt. Lbs.
	FR DW 820	12 x 12	12 1/4 x 12 1/4	1	12
	FR DW 820	14 x 14	14 1/4 x 14 1/4	1	14
	FR DW 820	16 x 16	16 1/4 x 16 1/4	1	17
	FR DW 820	18 x 18	18 1/4 x 18 1/4	1	19
	FR DW 820	24 x 24	24 1/4 x 24 1/4	1	30

Available with Ultra Lock - FRU DW 830 Series.
Call for quote.

GALVANIZED METAL CASING BEAD



The WB-FR Standard Access Door with a tape in flange allows for a trimless appearance to eliminate visual distraction.



Fire-rated access door installed in three-hour ceiling system

On size 16" x 16" and larger, extra spring supplied with door must be attached from back of door pan to framing or floor above in such a manner to insure that door is self-closing

** Hot Smoke Seal™ fire tested: Listed to meet the requirements of standards UL10B, UL10C, UBC 7-2, Part 1 and BS476: 1987 for application to fire rated door assemblies.



THERMAFIBER® Industrial Felt insulation for optimal fire protection (rated noncombustible by NFPA Standard 220 when tested in accordance with ASTM E136 and withstands ASTM E119) and superior sound control USG tested per ASTM C165: 8 pcf STC 15-2" thickness



UL, Northbrook, IL – 1-1/2 hour "B" label 450 degrees F (250 degrees C) maximum temperature rise in 30 minutes for vertical wall installations only. Test file number R-10364. This door may be used in a two hour fire rated wall assembly



Warnock Hersey International; Pittsburgh, CA – 1 hour fire rated combustible floor and ceiling assembly – Report # WHI-495-PSH-0191

Warnock Hersey International; Pittsburgh, CA – 3 hour fire rated non-combustible floor and ceiling assembly – Report # WHI-495-PSH-0192

Project: _____ Date: _____

Contractor: _____ Architect: _____

Sizes: _____ Quantity: _____ Approval Initials: _____

Distributed by
www.AccessDoor.com
Phone: (800) 608-6568
Fax: (409) 840-5545
info@accessdoor.com

