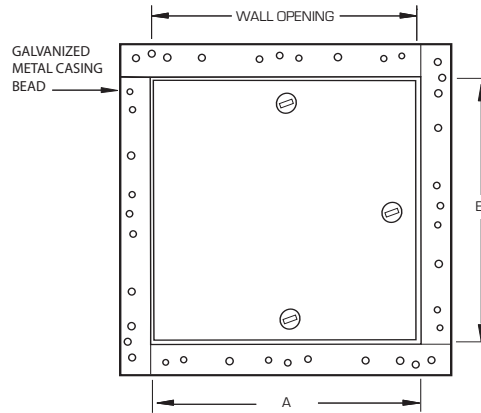


DETAIL & SUBMITTAL SHEET

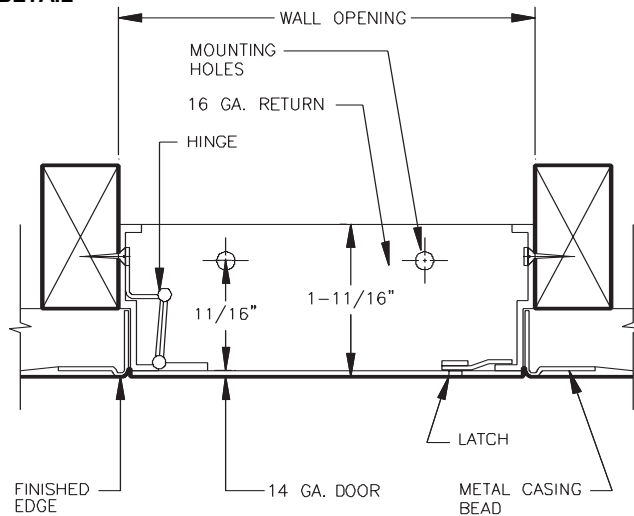
WALLS & CEILINGS



FRONT ELEVATION



SECTION DETAIL



A quality flush panel door with a tape-in drywall bead flange, eliminates visual distraction created by projecting, surface-mounted units.

SPECIFICATIONS:

Door: 14 ga. steel

Frame: 16 ga. steel. These models have a 1" wide perforated flange of 24 ga. galvanized steel for mounting purposes

Hinge: Full length piano hinge on 6 x 6 and 8 x 8. Full length piano hinge also on 24 x 36 and larger. Concealed hinge on sizes 10 x 10 to 24 x 24

Latches: Flush, stainless steel cam latch

Finish: Grey baked enamel coat

OPTIONS:

- Stainless Steel Type 304 No. 4 Satin Finish Brushed
- Stainless Steel Type 316 No. 4 Satin Finish Brushed

Options:

- WB 151 Key Code Cylinder locks-keyed alike with 2 keys per lock
- Mortise Best Lock
- Weather resistive neoprene gasketing on 3 sides*
- Special sizes available

✓	Item No.	Door Size W x H	Wall Opening	Cam Latch	Ship Wt. Lbs.
	DW 400	6 x 6	6 1/4 x 6 1/4	1	3
	DW 400	8 x 8	8 1/4 x 8 1/4	1	4
	DW 400	10 x 10	10 1/4 x 10 1/4	1	5
	DW 400	12 x 12	12 1/4 x 12 1/4	1	7
	DW 400	12 x 24	12 1/4 x 24 1/4	2	12
	DW 400	14 x 14	14 1/4 x 14 1/4	3	9
	DW 400	16 x 16	16 1/4 x 16 1/4	3	11
	DW 400	18 x 18	18 1/4 x 18 1/4	3	12
	DW 400	20 x 20	20 1/4 x 20 1/4	3	15
	DW 400	22 x 22	22 1/4 x 22 1/4	4	18
	DW 400	22 x 30	22 1/4 x 30 1/4	4	24
	DW 400	22 x 36	22 1/4 x 36 1/4	5	27
	DW 400	24 x 24	24 1/4 x 24 1/4	4	20
	DW 400	24 x 36	24 1/4 x 36 1/4	5	27
	DW 400	24 x 48	24 1/4 x 48 1/4	6	37
	DW 400	30 x 30	30 1/4 x 30 1/4	5	29
	DW 400	30 x 36	30 1/4 x 36 1/4	5	31
	DW 400	36 x 36	36 1/4 x 36 1/4	7	42

* Closed cell sponge, blend of Neoprene/EPDM/SBR. Meets ASTM D-1056: SCE 41, RE 41, 2A1; substrate UL 94HF-1 recognized.

Project: _____ Date: _____

Contractor: _____ Architect: _____

Sizes: _____ Quantity: _____ Approval Initials: _____

Distributed by
www.AccessDoor.com
 Phone: (800) 608-6568
 Fax: (409) 840-5545
 info@accessdoor.com



Corporate Office: 1330 Progress Drive • Front Royal, VA 22630